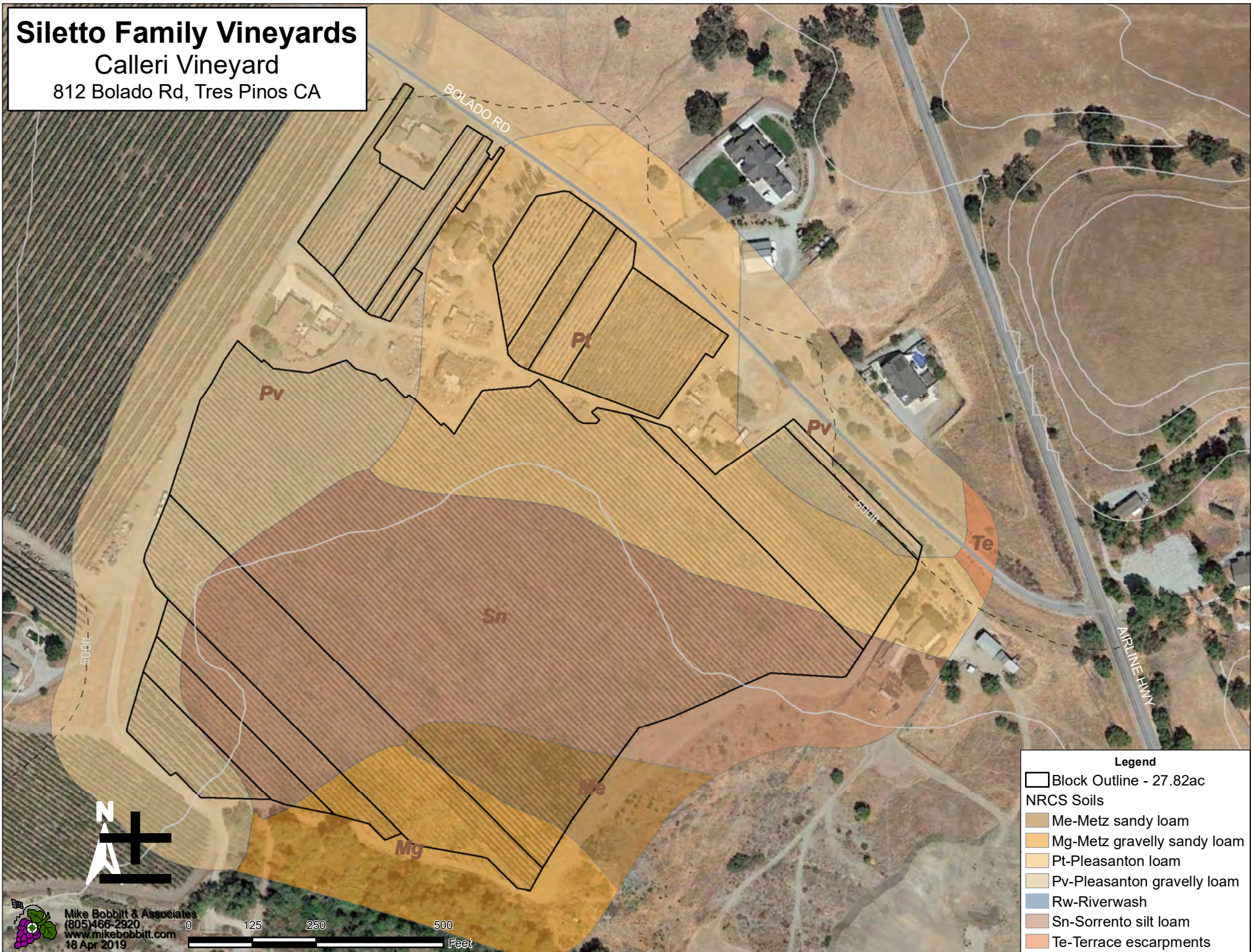


Siletto Family Vineyards
Calleri Vineyard
 812 Bolado Rd, Tres Pinos CA



Legend

- Block Outline - 27.82ac
- NRCS Soils**
- Me-Metz sandy loam
- Mg-Metz gravelly sandy loam
- Pt-Pleasanton loam
- Pv-Pleasanton gravelly loam
- Rw-Riverwash
- Sn-Sorrento silt loam
- Te-Terrace escarpments

Mike Bobbitt & Associates
 (805)466-2920
 www.mikebobbitt.com
 18 Apr 2019

Disclaimer: The information herein was compiled from multiple publicly available sources, is considered reliable and the most current available; it is, however, provided without warranty, either express or implied. No liability is assumed either directly or indirectly. Contact a licensed Land Surveyor for any questions regarding legal property boundaries